



THE
STRATFORD
GALLERY

John Lendis
The Beast of Burford

A new collection

Available online & in gallery from
Saturday June 24th

THE BEAST OF BURFORD

“In the rolling hills of the Cotswolds, a strange and unsettling presence has been felt. Whispers of a mysterious creature, black as night and fierce as a lion, have shaken the locals to their very core.

Reports of sightings have flooded in, each more fantastical and terrifying than the last, the beast has been spotted prowling the countryside, evoking fear and awe in equal measure.

Yet, even in the midst of this fear, there is a sense of excitement and intrigue. The hunt for the elusive black panther continues, with eager adventurers braving the dark in search of a glimpse of the mysterious creature.

In this tense and dramatic moment, the Cotswolds are transformed, as the threat of the unknown looms large, and the hunt for answers becomes all-consuming.”

John Lendis, 2023



GALLERY STATEMENT

Mysterious, otherworldly and poetic are just a few words that perfectly describe this new collection of works by internationally collected and Cotswolds based artist John Lendis, inspired by his local and infamous 'beast'. Nicknamed 'The Beast of Burford', there have been frequent sightings over the last few years of a suspected large panther stalking the beautiful and unspoiled landscape of The Cotswolds. Rumours and theories abound, with some pointing to the possibility of escaped wild cats whilst others suggest origins of a more supernatural nature. John's unique combination of painting styles creates a dream like setting for this series of work, where 'The Beast' inhabits different locations around the Cotswolds, including Ablington, Bledington, Idbury and Burford. The collection seeks to pay homage to the juxtaposition of a wild mysterious beast against a landscape of tame Cotswolds perfection.

John has always taken a keen interest in mythology, fantasy and particularly folklore, for the most part because of its power to shape our understanding of the world around us, as well as how such tales and stories can captivate, inspire, and take on a life of their own. This new collection of paintings

and drawings is the culmination of a distillation of thoughts, residing somewhere on the edge of fantasy and imagination, a theme found so readily in John's work.

Throughout his artistic career, which spans over 50 years, John has endeavoured relentlessly to create paintings that speak of experiences that struggle to be described or decorated with words. His path has seen him take many turns exploring the world through every type of physical landscape. His travels to both the most intensely populated cities of the world, as well as the furthest and most remote uninhabited locations have all left their fingerprint in his mind's eye. Catalysts perhaps to his his hard won symbols and motifs that call to us from the surface of his paintings. At this stage in his career, he finds himself drawn to creating works around the most magical wildlife from this area; foxes, hares and now the some what more mysterious 'Beast'.



ARTIST STATEMENT

“I remember a conversation with a Colonel in the American army during a long hot train journey across Malaysia in the early seventies. He was involved in camouflage; responsible for the designs for the infamous ‘tiger stripes’ worn by special forces in the Vietnam war. As we passed through some long passages of Malaysian jungle we mused about the stark black shadows.

We talked about black, the best colour for parachutes, its ability to ‘break objects completely’ and he was the person that put the phrase ‘black moving against black’ into my head. This being the way to train your sight to recognise danger as you move through the jungle.

This idea of black moving against black has surfaced many years later and sat by my side during the production of these works.”

John Lendis, 2023



THE BRIDGE AT ABLINGTON

Oil on Canvas

80 x 100 cm

£3,500

BLEDINGTON

Oil on canvas

80 x 100 cm

£3,500





THE BEAST AT
THE FEATHERED NEST/
EARLY SNOW

Oil on Canvas

100 x 120 cm

£4,500

THE BEAST OF BURFORD

Oil on Canvas

100 x 120 cm

£4,500





SAINT OSWALD
AND THE BEAST

Oil on canvas

100 x 120 cm

£4,500

IDBURY

Oil on canvas

80 x 100 cm

£3,500





THE BEAST AND
THE LAND ROVER

Oil on canvas

80 x 110 cm

£3,500

WINDRUSH RIVER

Oil on canvas

45 x 60 cm

£2,2000





THE BEAST AT THE
FEATHERED NEST

Oil on canvas

40 x 60 cm

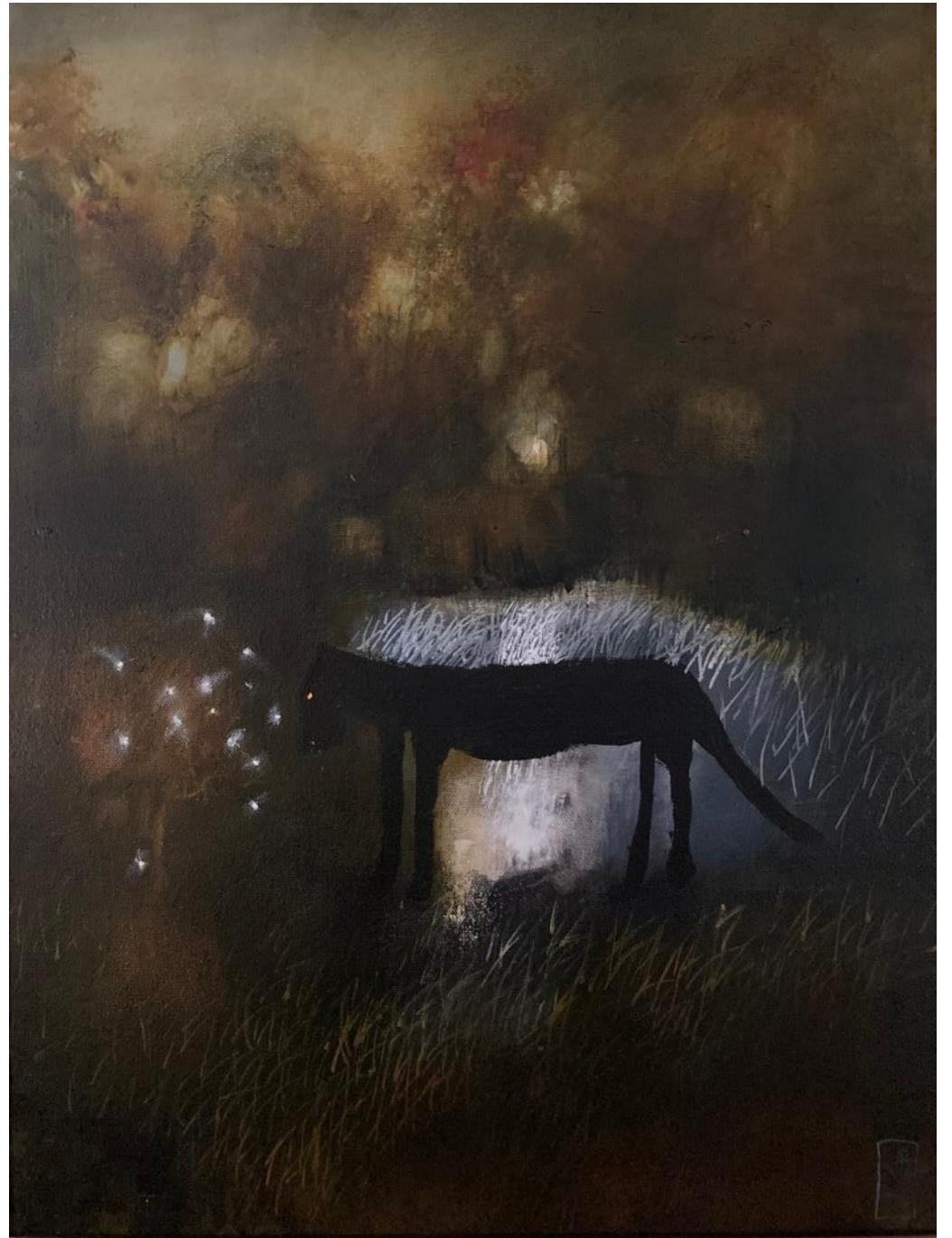
£2,200

THE BEAST WITH FIREFLIES

Oil on canvas

60 x 45 cm

£2,200





BEAST WITH HARE

Ink and acrylic on Hahenemula
paper (unframed)

78 x 106 cm

£1,150

THE BEAST IN THE PINES

Ink and acrylic on Hahenemula
paper (unframed)

78 x 106 cm

£950





SIGHTING AT IDBURY

Ink and acrylic on Hahenemula
paper (unframed)

56 x 78.5 cm

£650

MELANCHOLY

Ink and acrylic on Hahenemula
paper (unframed)

55.5 x 56.5 cm

£450





SMALL BEAST IN THE PINES

Ink and acrylic on Hahenemula
paper (unframed)

57 x 76 cm

£750

ALONG THE BANK OF
THE RIVER

Oil on canvas

18 x 23.5 cm

£650





THE WAITING I

Oil on canvas

18 x 23.5 cm

£650

BLACK MOVING AGAINST
BLACK I

Oil on canvas

18 x 23.5 cm

£650





TOO CLOSE TO THE VILLAGE

Oil on canvas

18 x 23.5 cm

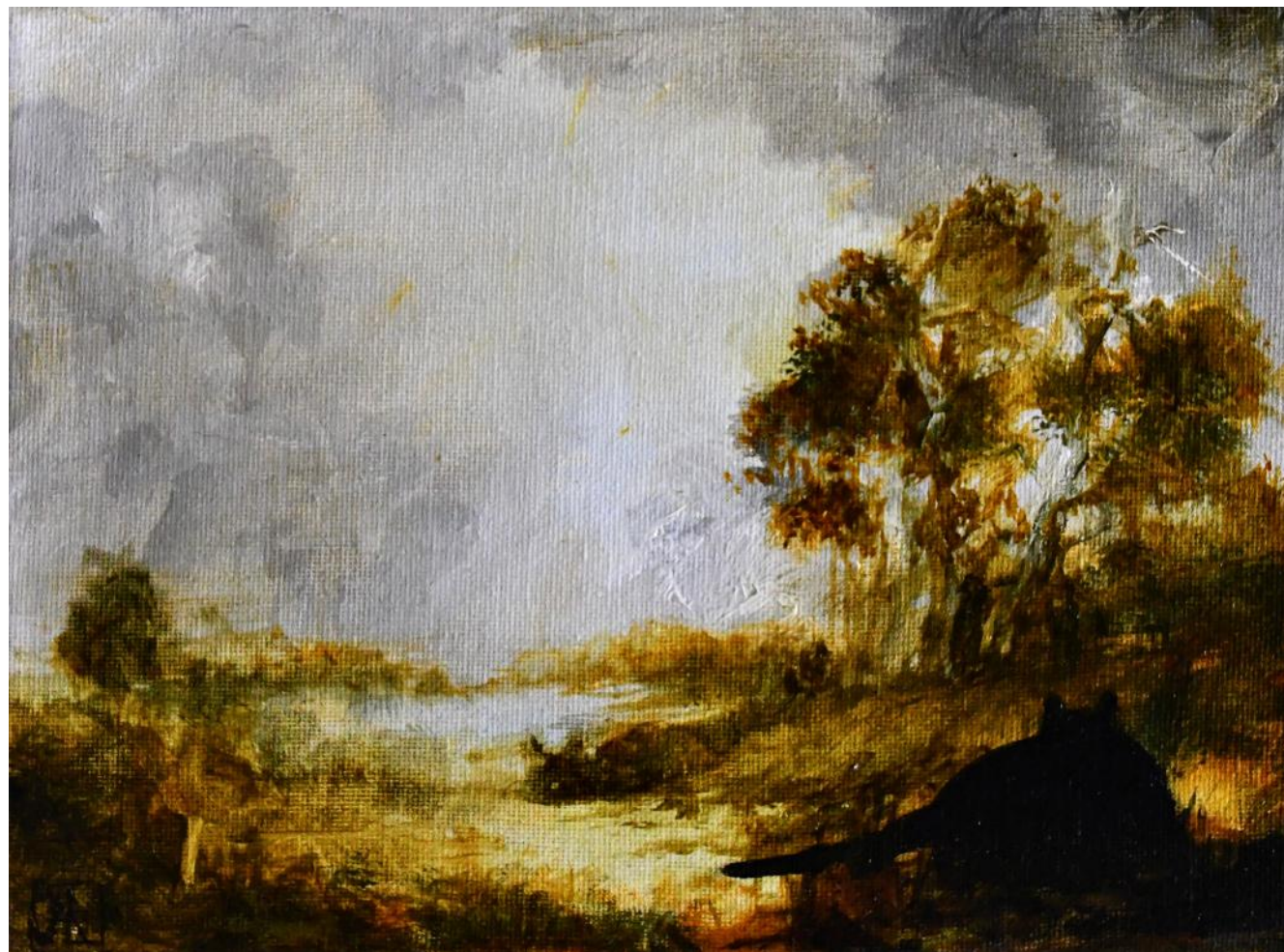
£650

THE WAITING II

Oil on canvas

18 x 23.5 cm

£650





A SPRING EVENING BY
WINDRUSH RIVER

Oil on canvas

18 x 23.5 cm

£650

ST JOHN'S BRIDGE

Oil on canvas

18 x 23.5 cm

£650





A MIDSUMMER'S NIGHT

Oil on canvas

18 x 23.5 cm

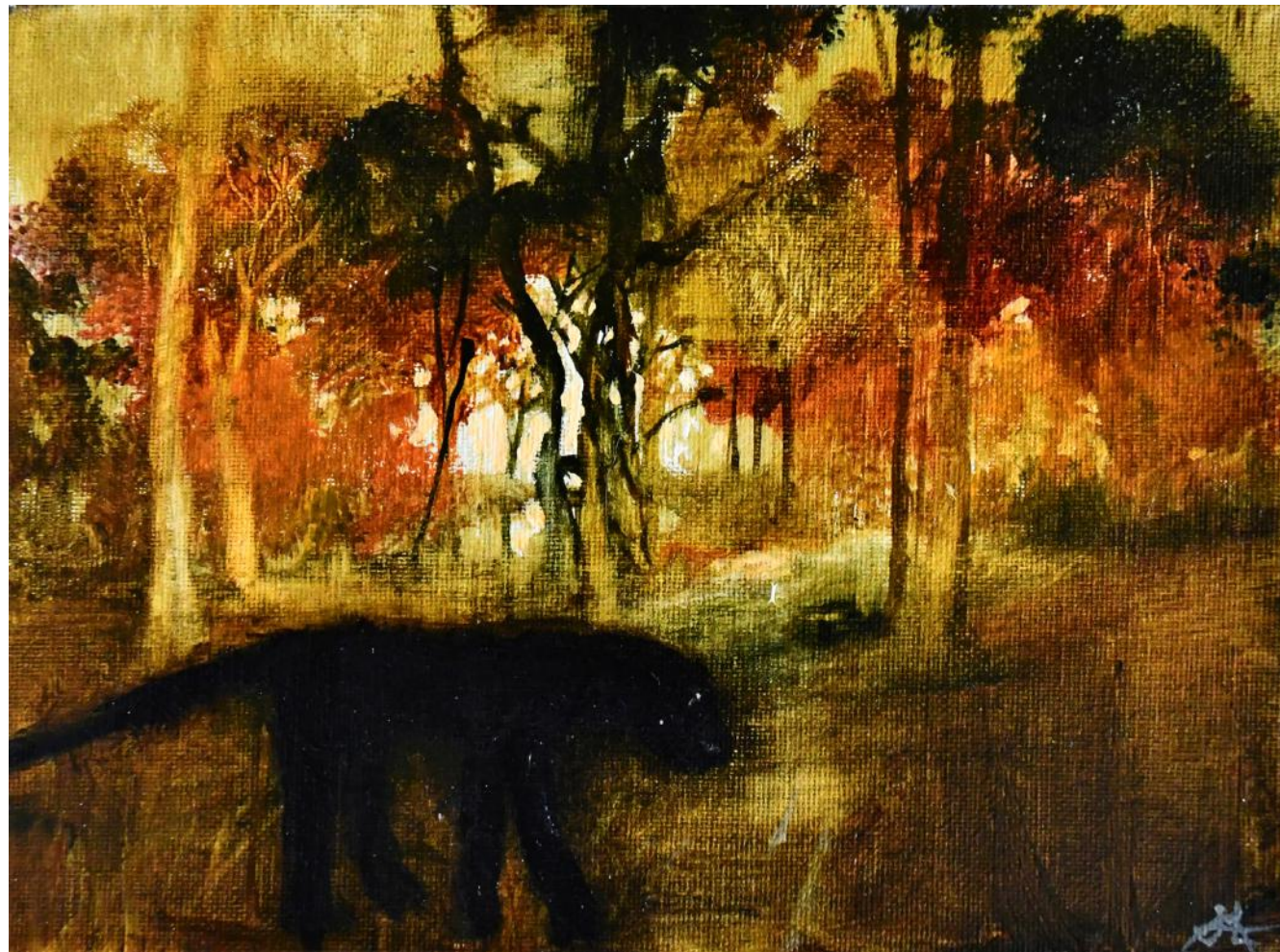
£650

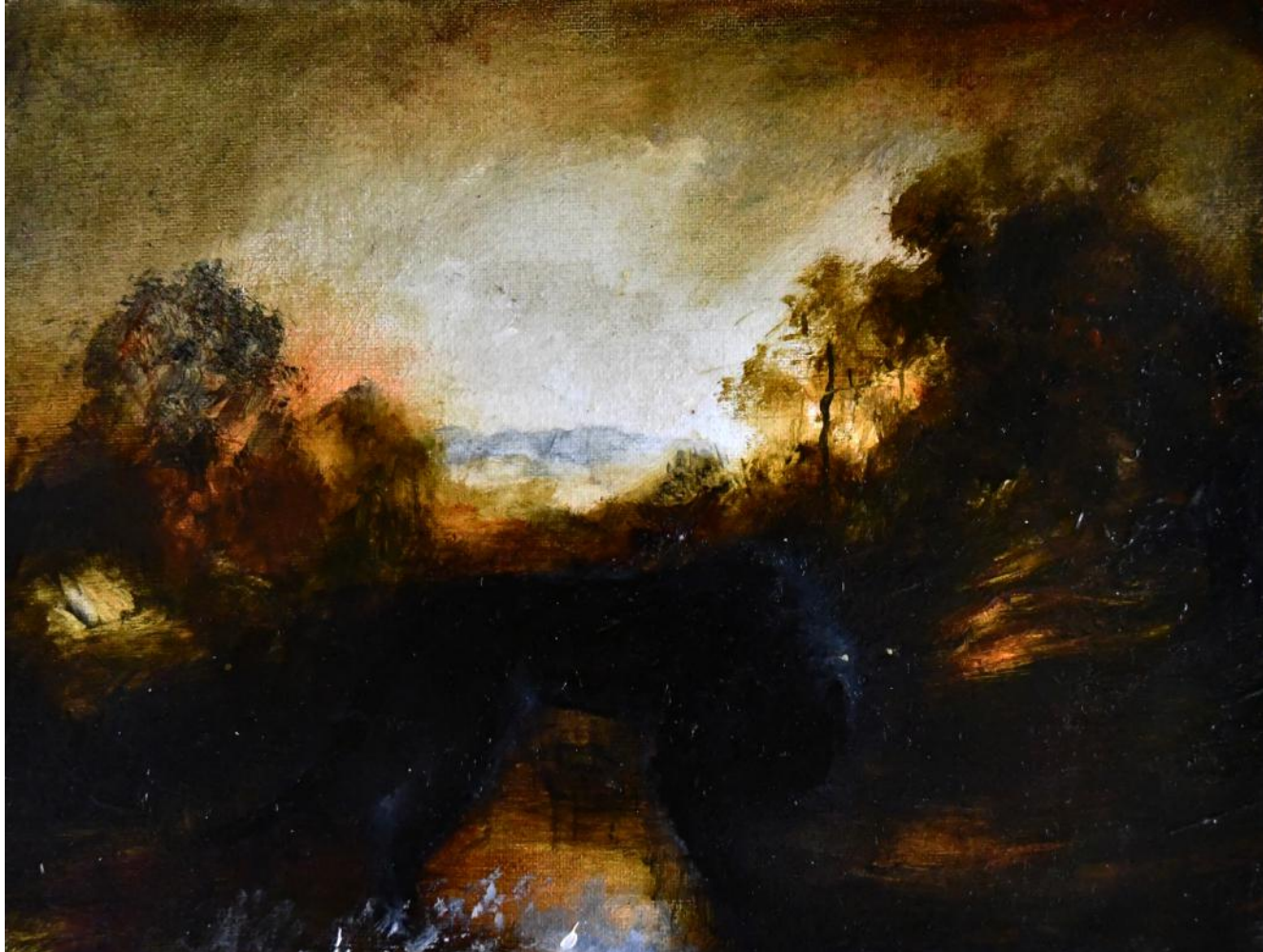
THE FOREST OF DEAN

Oil on canvas

18 x 23.5 cm

£650





BLACK MOVING AGAINST
BLACK II

Oil on canvas

18 x 23.5 cm

£650

JOHN LENDIS

John Lendis is an internationally collected artist born in Nottingham in 1950. He lives and works in today in the Cotswolds. His works straddle the space between the physical environment in which he lives and the emotional landscape that his subjects invoke and inhabit. John gained his fine art training in Australia, where his work has been widely exhibited and collected. Having moved back to the UK some fifteen years ago, his paintings blend the wealth of richness from his life experiences, allowing the viewer to take journeys between what is real and what is imagined.

Recurring themes in John's work include journeys, indecision, our relationship with the natural world as well as our interior and exterior selves. At this stage in his career however, John has a particular penchant, not to mention skill, for creating series of animal based works, inspired by his local wildlife in the Cotswolds. He blends loose and urgent brushwork with exquisite attention to detail, yielding many questions and thus a lifetime of interest in each piece. His works' form relationships with their owners instantly, usually in the form of emotional connections through the almost dream-like absorption of John's scenes.



THE
STRATFORD
GALLERY

All artworks are available to purchase on receipt of this catalogue. If you have any queries regarding any of the artworks listed, please do not hesitate to get in contact with a member of the gallery team via art@thestratfordgallery.co.uk or call us on 01386 335229.

